

THE RIGHT ANALYZER FOR *YOUR* APPLICATION!

## CMFA-P2000 PORTABLE PREMIX GAS/FLUE GAS ANALYZER

VERSATILE PRECOMBUSTION OR FLUE GAS ANALYZER COMMONLY USED FOR SPOT SAMPLING GLASS MELTING TANKS, MIX STATION TUNING ON FOREHEARTHES, FURNACE ATMOSPHERE CONTROL, AND FOR FLAME TREATING APPLICATIONS.

### FEATURES/BENEFITS

- Two analyzers in one. Acts as a flue gas oxygen analyzer or a premix gas analyzer.
- Built-in compressor for pulling flue gas samples into the analyzer.
- Works in either excess fuel or excess air environments.
- In premix mode, measures air/fuel ratio in open-flame applications where flue gas measurements are impractical.
- Provides much better accuracy than directly measuring oxygen or combustibles in the premix gas.

### SPECIFICATIONS

**Enclosure:** Both the sensor and control unit are housed in a luggage-style, aluminum carrying case

**Operating Range:** 100% to 0.1% excess oxygen and 0.1% to 50% excess fuel

**Display:** Four-line x 20-character vacuum fluorescent display. Displays combinations of excess oxygen, excess fuel, combined excess oxygen to excess fuel, fuels/oxides, oxides to fuels, combustibles, time and date, cell temperature, user programmable text, thermocouple mV, or cell mV. Password protection and context-sensitive help are also provided.

**Diagnostics:** System test for A/D, RAM, EEPROM and keypad. Display line 4 reserved for full text error and diagnostic messages. Twenty-entry event log.

**Analog Output:** Isolated, linear current output, fully scalable. Select excess oxygen, excess fuel, combined excess oxygen to excess fuel range, combustibles, fuels/oxides, oxides/fuels, cell temperature, thermocouple mV and cell mV. Hold or track during calibration and select degree of damping. Maximum load 1200 ohms.

**Calibration:** Calibrate or verify calibration. Store last calibration and verification data.

**Built-in Compressor:** Draws gas from up to 6 inches of water vacuum.

**Power Requirements:** 115 VAC  $\pm$ 10%, 50-60 Hz, 747 VA max.; 230 VAC  $\pm$ 10%, 50-60 Hz, 2222 VA max.



### Environment

Ambient Temperature:

14°F to 116°F (-10°C to 47°C) for Control Section

-5°F to 100°F (-20°C to 37.8°C) for Sensor Section (See Note)

Relative Humidity: 10% to 90%, non-condensing

### Sample Temperature

Flue Gas Inlet: 0°F to 2000°F (-18°C to 1100°C)

Premix Inlet: 32°F to 122°F (0°C to 50°C)

**Accuracy:**  $\pm$  2% of measured value or  $\pm$ 0.1% O<sub>2</sub>, whichever is greater.  $\pm$  5% of measured value or  $\pm$ 0.25% excess fuel, whichever is greater (specifications based on 0-15% range, natural gas).

### Response Time

Percent Oxygen: 63% < 18 seconds; 90% < 22 seconds

Percent Excess Fuel: 63% < 17 seconds; 90% < 63 seconds

**Drift:** Less than 0.1% of the cell output per month

**Repeatability:**  $\pm$  0.2% of measured value

**Sample / Calibration Gas Flow Rate:** 2 SCFH (1 liter/min.)

**Maximum Sample Pressure:** 10 PSIG (68.95 kPa)

**Dimensions (H x W x D):** 10.75" x 18" x 16" (27.3 cm x 45.7 cm x 40.7 cm)

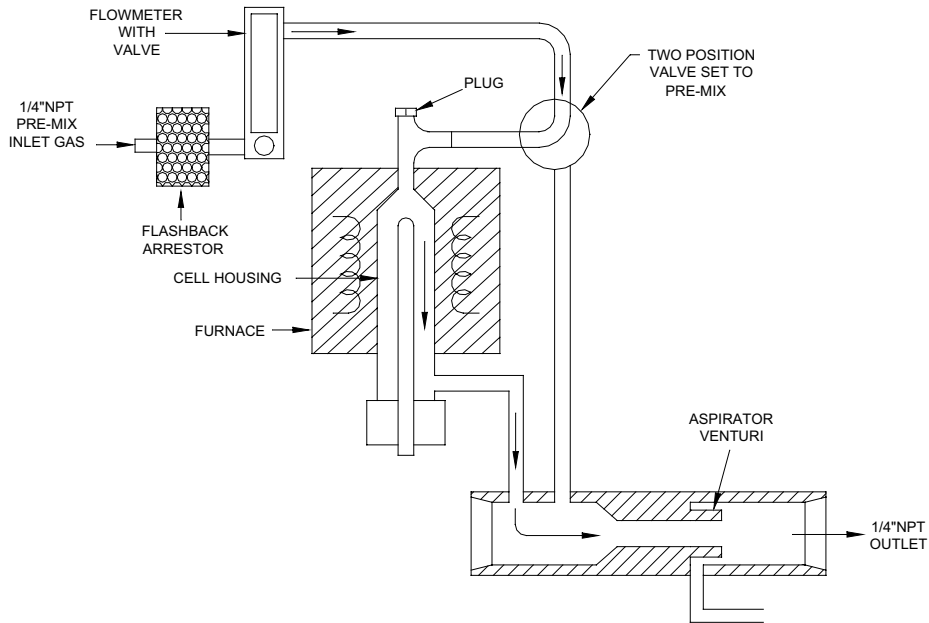
**Weight:** 44 lb (19.9 kg)

### System Compliance

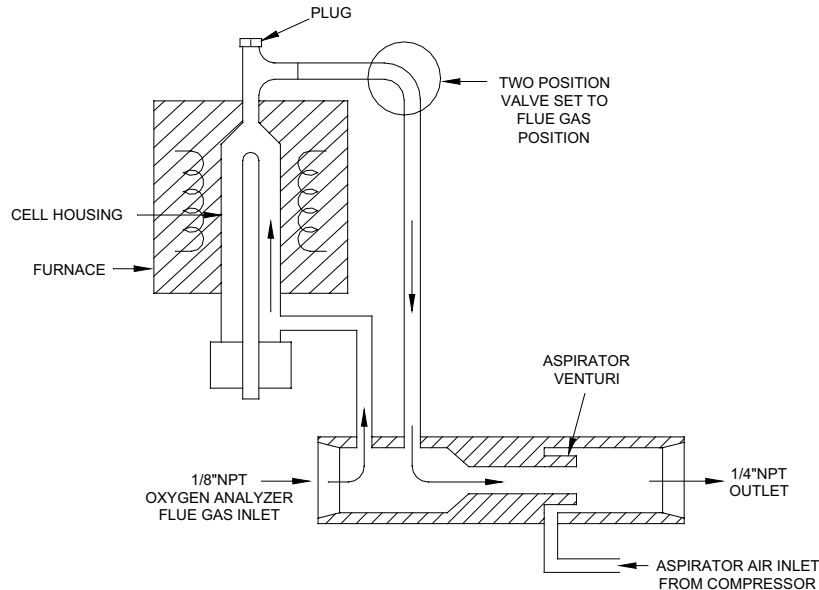
EMC Directive: 89/336/EEC

Low Voltage Directive: UL 3101-1

### PRE-MIX MODE FLOW DIAGRAM



### FLUE GAS MODE FLOW DIAGRAM



**NOTE:** The sensor is also suitable for longer term testing of several days or weeks (sensor temperature max. 100°F (38.7°C)). It can also be used for spot checking up to a maximum sensor temperature of 122°F (50°C). For applications where the analyzer will be used for continuous duty in ambient conditions above 100°F (38.7°C), the pump should be placed in a cooler location or an external air supply should be used.

One of a family of innovative process analyzer solutions from AMETEK Process Instruments. Specifications subject to change without notice.

**USA - Pennsylvania**  
150 Freeport Road  
Pittsburgh, PA 15238  
Ph. 412-828-9040  
Fax 412-826-0399

**MANUFACTURING LOCATIONS**



**CANADA**  
2876 Sunridge Way N.E.  
Calgary, AB T1Y 7H9  
Ph. 403-235-8400  
Fax 403-248-3550

**USA - Delaware**  
455 Corporate Blvd.  
Newark, DE 19702  
Ph. 302-456-4400  
Fax 302-456-4444

**USA - Oklahoma**  
2001 N. Indianwood Ave.  
Broken Arrow, OK 74012  
Ph. 918-250-7200  
Fax 918-459-0165

**AMETEK®**  
**PROCESS INSTRUMENTS**  
[www.thermax.com](http://www.thermax.com)

© 2003, by AMETEK, Inc. All rights reserved.  
605PDF (P580)



**SUPPORT LOCATIONS**

**USA - Texas**  
Ph. 281-463-2820  
Fax 281-463-2701

**CHINA - Beijing**  
Ph. 86-10-85262111  
Fax 86-10-85262141

**CHINA - Shanghai**  
Ph. 86 21 6426 8111  
Fax 86 21 6426 7054

**FRANCE**  
Ph. 33 1 30 68 89 00  
Fax 33 1 30 68 89 99

**GERMANY**  
Ph. 49 21 59 91 36 0  
Fax 49 21 59 91 36 80

**MIDDLE EAST - Dubai**  
Ph. 971-4-881 2052  
Fax 971-4-881 2053

**SINGAPORE**  
Ph. 65-6484-2388  
Fax 65-6481-6588