

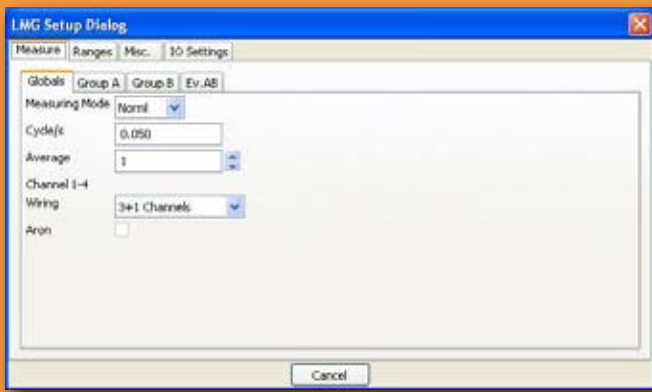
## Visualisation, Logging and Evaluation Configuration-/Control Software

The link between  
unit under test, power meter and developer

The screenshot displays the LMGControl software interface with several windows open:

- Exportieren ...**: A dialog box for selecting data to export. It shows two lists: 'Verfügbare Werte' (Available Values) and 'Ausgewählte Werte' (Selected Values). The available values include 'TIMESTAMP', 'P1', 'P2', 'P3', and 'P4'. The selected values include 'TIMESTAMP', 'P1', 'P2', 'P3', and 'P4'. Buttons include 'Alle hinzufügen >>', 'Hinzufügen >>', '<< Entfernen', and '<< Alle entfernen'.
- Display Plugin**: A window showing real-time data for four channels: **P1: 85.3418**, **P2: 85.3636**, **P3: 85.3070**, and **P4: 85.3754**.
- Table Plugin**: A window displaying a table of recorded data. The table has columns for 'Datei', 'P1', 'P2', 'P3', and 'P4'. The data rows show timestamps and corresponding values for each channel.
- Plot Plugin**: A window showing a line graph of the plotting value for P1. The y-axis is labeled 'keiner' and ranges from 82.0 to 87.0. The x-axis is labeled 'Zeit' and ranges from 4873 to 536. The plot shows a fluctuating signal with a peak value of 8036.

- Transfer of the current configuration and remote-edit on PC
- Selection of any measuring values from different channels and groups
- Online visualisation during the recording, in graphical and in table form
- Export of a subset of the recorded measuring values for a selectable time period
- Multiplicity of evaluation modules additional to basic version
- Timestamps with a resolution of 1 millisecond



Measuring menu in LMG-CONTROL software ...



... and at the precision power meter

## Modular design

- Plot module: Y(t)-plot of selected measuring values
- Table module: tabular display of measuring values
- Display module: display of current values

## Save and load device configuration

- edit LMG-scripts and formulas remotely in LMG-CONTROL

## Interactive mode to set up your measurements

- immediate transfer and display of configuration
- concise selection of measuring values

## Recording and storage

- recording adds timestamps with accuracy in the range of milliseconds for precise data processing and analysis
- programmable recording:
  - with timer (start and stop, resp. recording duration)
  - triggered by digital inputs
  - when measuring value exceeds definable threshold
- compressed storage of data saves disk space

## Analysis

- modules for different display and analysis

## Data export

- reduction of data size by selection of a subset of the recorded measuring values and selection of a time period
- intelligent data export optimised for external applications like Microsoft Excel, Matlab, etc.

Subject to technical changes, especially to improve the product, at any time without prior notification.